



Planning, Building and Growth Management
Building Division

Brampton Maps: <http://maps1.brampton.ca/mybrampton/>

October 2025

LEGAL DESCRIPTION	NEW ADDRESS	ADDITIONAL COMMENTS
NEW COMPLETE BUILDING INDUSTRIAL:		
CONC 10 ND PT LOTS 2 AND 3 RP 43R11653 PARTS 1 2 4 TO 7 PT PART 3 RP 43R35586 PARTS 2 TO 4	8380 Highway 50	
NEW COMPLETE BUILDING COMMERCIAL:		
M1907 BLK 2	42 Ace Drive	
M1927 BLK 1	5 Eamont Street	
NEW COMPLETE BUILDING INSTITUTIONAL:		
CONC 1 WHS LOT 14	35 Sir Lou Drive	
TOWNHOUSES:		
M2152 BLK 1 BLDG 1	2 History Cir Site 101	
	4 History Cir Site 102	
	6 History Cir Site 103	
	8 History Cir Site 104	
	10 History Cir Site 105	
	12 History Cir Site 106	
	14 History Cir Site 107	
	16 History Cir Site 108	
M2152 BLK 1 BLDG 2	18 History Cir Site 201	
	20 History Cir Site 202	
	22 History Cir Site 203	
	24 History Cir Site 204	
	26 History Cir Site 205	
	28 History Cir Site 206	
M2152 BLK 1 BLDG 3	30 History Cir Site 301	
	32 History Cir Site 302	
	34 History Cir Site 303	
	36 History Cir Site 304	
	38 History Cir Site 305	
	40 History Cir Site 306	
M2152 BLK 1 BLDG 4	42 History Cir Site 401	
	44 History Cir Site 402	
	46 History Cir Site 403	
	48 History Cir Site 404	
	50 History Cir Site 405	
	52 History Cir Site 406	
M2152 BLK 1 BLDG 5	54 History Cir Site 501	
	56 History Cir Site 502	
	58 History Cir Site 503	
	60 History Cir Site 504	
	62 History Cir Site 505	
	64 History Cir Site 506	
	66 History Cir Site 507	
M2152 BLK 1 BLDG 6	68 History Cir Site 601	
	70 History Cir Site 602	
	72 History Cir Site 603	
	74 History Cir Site 604	
	76 History Cir Site 605	
	78 History Cir Site 606	
	80 History Cir Site 607	
M2152 BLK 1 BLDG 7	25 History Cir Site 701	
	27 History Cir Site 702	
	29 History Cir Site 703	
	31 History Cir Site 704	
	33 History Cir Site 705	
	35 History Cir Site 706	
M2152 BLK 1 BLDG 8	37 History Cir Site 801	
	39 History Cir Site 802	
	41 History Cir Site 803	
	43 History Cir Site 804	
	45 History Cir Site 805	
	47 History Cir Site 806	
	49 History Cir Site 807	
M2152 BLK 1 BLDG 9	79 History Cir Site 901	
	77 History Cir Site 902	
	75 History Cir Site 903	
	73 History Cir Site 904	
	71 History Cir Site 905	
	69 History Cir Site 906	
	67 History Cir Site 907	
M2152 BLK 1 BLDG 10	65 History Cir Site 1001	
	63 History Cir Site 1002	
	61 History Cir Site 1003	
	59 History Cir Site 1004	
	57 History Cir Site 1005	
	55 History Cir Site 1006	
	53 History Cir Site 1007	
	51 History Cir Site 1008	
M2152 BLK 1 BLDG 11	130 History Cir Site 1101	
	128 History Cir Site 1102	
	126 History Cir Site 1103	
	124 History Cir Site 1104	
	122 History Cir Site 1105	
	120 History Cir Site 1106	
	118 History Cir Site 1107	
	116 History Cir Site 1108	
M2152 BLK 1 BLDG 12	114 History Cir Site 1201	
	112 History Cir Site 1202	
	110 History Cir Site 1203	
	108 History Cir Site 1204	
	106 History Cir Site 1205	
	104 History Cir Site 1206	
	102 History Cir Site 1207	
	100 History Cir Site 1208	
M2181 BLK 99	47 Fieldfare Road - Site 1	
	45 Fieldfare Road - Site 2	
	43 Fieldfare Road - Site 3	
	41 Fieldfare Road - Site 4	
	7 Eveningmist Way - Site 5	
	5 Eveningmist Way - Site 6	
	3 Eveningmist Way - Site 7	
	55 Fieldfare Road - Site 8	
	53 Fieldfare Road - Site 9	
	51 Fieldfare Road - Site 10	
	49 Fieldfare Road - Site 11	
M2181 BLK 105	24 Thornbird Crescent - Site 1	
	22 Thornbird Crescent - Site 2	
	20 Thornbird Crescent - Site 3	
	18 Thornbird Crescent - Site 4	
	16 Thornbird Crescent - Site 5	
	14 Thornbird Crescent - Site 6	
NEW CONDOMINIUM/APARTMENT		
BR2 PT LOTS 53, 54 PT LOTS 50,51,52 RP43R-6278	9 Church Street East	
ADDITIONAL REGISTERED UNITS ADDRESSING:		
Registered Two-Unit Dwelling Report - October 1 - 31/25	See attached report	
Registered Three-Unit Dwelling	27 Drayton Crescent, Unit 3	
	13 Harper Road, Unit 3	
	37 Hillcrest Avenue, Unit 3	
Unregistered Two-Unit Dwelling	24 Idol Road, Unit 2	Will no longer be a two unit dwelling
REGISTERED PLANS:		
M2186	See attached mylar	

PLAN OF SUBDIVISION OF
PART OF LOT 5, CONCESSION 4
WEST OF HURONTARIO STREET
(GEOGRAPHIC TOWNSHIP OF CHINGUACOUSY)
CITY OF BRAMPTON
REGIONAL MUNICIPALITY OF PEEL

SCALE 1:500
10m 20m 30m 40 metres
R-PE SURVEYING LTD., O.L.S.

METRIC
DISTANCES AND COORDINATES SHOWN ON THIS PLAN ARE IN METRES AND
CAN BE CONVERTED TO FEET BY DIVIDING BY 0.3048.

NOTES

- DENOTES MONUMENT SET
- DENOTES MONUMENT FOUND
- SSIB DENOTES SHORT STANDARD IRON BAR
- IB DENOTES STANDARD IRON BAR
- IB DENOTES IRON BAR
- PL1 DENOTES PLAN 43R-40975
- PL2 DENOTES PLAN 43R-19071
- PL3 DENOTES PLAN 43R-27076
- PL4 DENOTES PLAN 43M-1379
- PL6 DENOTES BUILDING LOCATION SURVEY BY W. N. FENTON LIMITED, O.L.S., DATED AUGUST 18, 1983
- PL7 DENOTES PLAN 43R-41737
- P.I.N. DENOTES PROPERTY IDENTIFIER NUMBER
- ORP DENOTES OBSERVED REFERENCE POINT
- (923) DENOTES TARASICK MCILLAN KUBICKI LIMITED, O.L.S.
- (1059) DENOTES W. M. FENTON LTD., O.L.S.
- (N) DENOTES NORTH IDENTIFIED
- N/S/E/W DENOTES NORTH/SOUTH/EAST/WEST
- W.H.S. DENOTES WEST OF HURONTARIO STREET
- RW DENOTES RETAINING WALL
- WF DENOTES WIRE FENCE

DUE TO CONSTRUCTION ACTIVITIES, ALL SET MONUMENTS ARE PLASTIC BARS UNLESS OTHERWISE NOTED.

ALL FOUND MONUMENTS ARE BY R-PE SURVEYING LTD., O.L.S. UNLESS NOTED OTHERWISE

INTEGRATION NOTE

BEARINGS ARE UTM GRID, DERIVED FROM OBSERVED REFERENCE POINTS (A) AND (B) USING CANNET REAL TIME NETWORK (RTN) OBSERVATIONS, UTM ZONE 17, NAD83 (CSRS:CBNV6:2010.0).

COORDINATES ARE UTM ZONE 17, NAD83 (CSRS:CBNV6:2010.0), TO UTM ACCURACY PER SEC. 14 (2) OF OREG. 218/10, AND CANNOT, IN THEMSELVES, BE USED TO RE-ESTABLISH CORNERS OR BOUNDARIES SHOWN ON THIS PLAN.

POINT	NORTHING	EASTING
ORP (A)	4834338.43	597434.76
ORP (B)	4834044.90	597515.78
PRS402698094688	4854714.46	596022.52

DISTANCES ARE GROUND AND CAN BE CONVERTED TO GRID BY MULTIPLYING BY THE COMBINED SCALE FACTOR OF 0.999676.

ROTATION NOTE

FOR BEARING COMPARISONS, A ROTATION OF 0°51'45" COUNTER CLOCKWISE WAS APPLIED TO PL2 TO CONVERT TO GRID BEARINGS.

FOR BEARING COMPARISONS, A ROTATION OF 0°51'55" COUNTER CLOCKWISE WAS APPLIED TO PL3 TO CONVERT TO GRID BEARINGS.

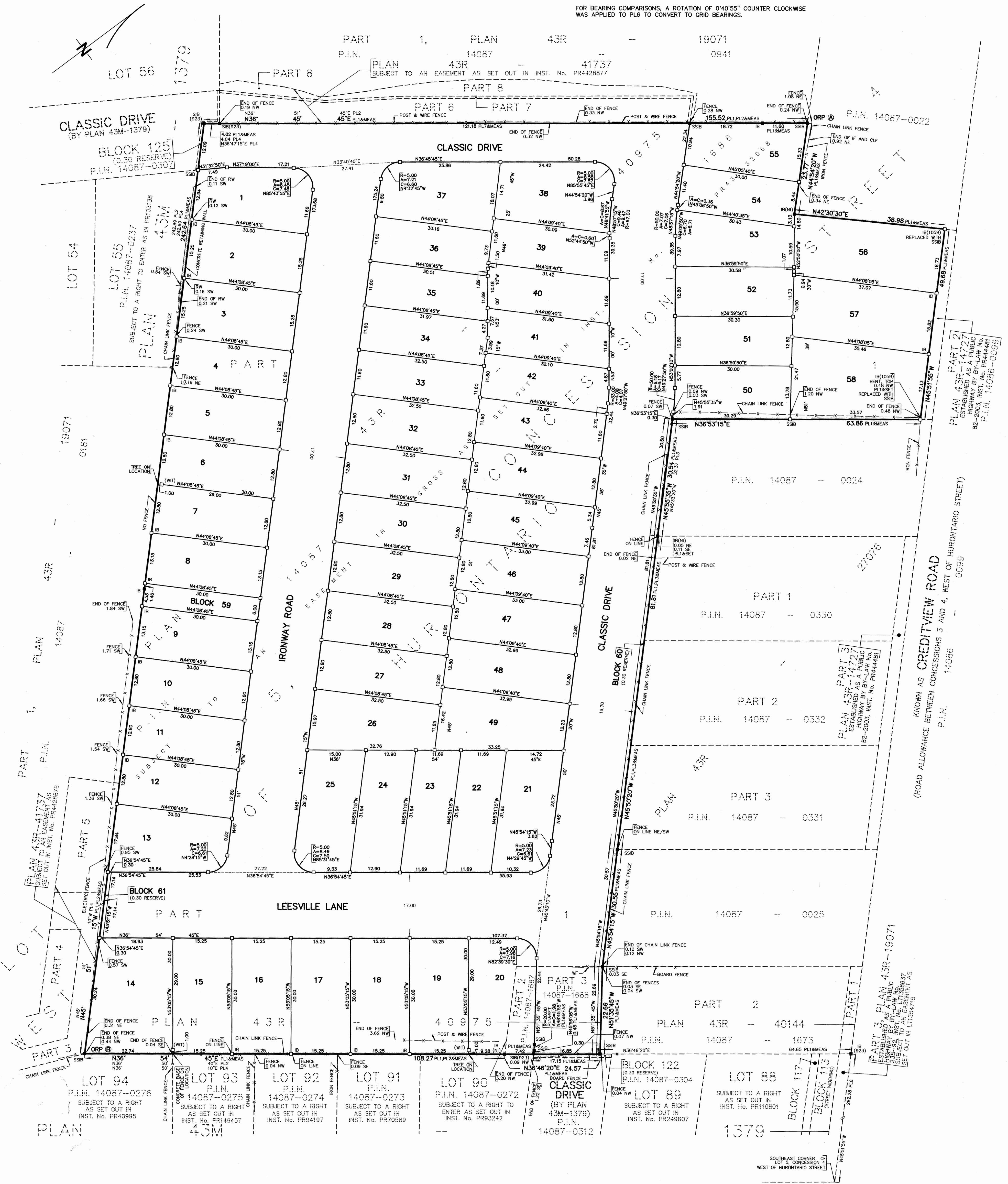
FOR BEARING COMPARISONS, A ROTATION OF 0°40'55" COUNTER CLOCKWISE WAS APPLIED TO PL6 TO CONVERT TO GRID BEARINGS.

PLAN 43M-2186

I CERTIFY THAT THIS PLAN IS REGISTERED IN THE LAND REGISTRY OFFICE FOR THE LAND TITLES DIVISION OF PEEL (No.43) AT 10:08 O'CLOCK ON THE 17 DAY OF September 2025 AND ENTERED IN PARCEL REGISTER(S) FOR PROPERTY IDENTIFIER(S) 14087-1686, 14087-1687 AND 14087-1688 AND THE REQUIRED CONSENTS ARE REGISTERED AS PLAN DOCUMENT No. PR4507204

E. J. J. J.
REPRESENTATIVE FOR LAND REGISTRAR FOR THE LAND TITLES DIVISION OF PEEL (No.43)

THIS PLAN COMPRISES ALL OF P.I.N.s 14087-1686, 14087-1687 AND 14087-1688. LOTS 1 TO 19, BOTH INCLUSIVE, PART OF LOT 20, LOTS 21 TO 58, BOTH INCLUSIVE, BLOCK 59, PART OF BLOCK 60, ALL OF BLOCK 61, PART OF CLASSIC DRIVE, ALL OF IRONWAY ROAD AND LEESVILLE LANE ARE SUBJECT TO AN EASEMENT IN GROSS AS SET OUT IN INST. No. PR432068.



OWNER'S CERTIFICATE

THIS IS TO CERTIFY THAT:

- LOTS 1 TO 58, BOTH INCLUSIVE, BLOCK 59, STREETS, NAMELY CLASSIC DRIVE, IRONWAY ROAD AND LEESVILLE LANE AND RESERVES, NAMELY BLOCKS 60 AND 61 HAVE BEEN LAID OUT IN ACCORDANCE WITH OUR INSTRUCTIONS.
- THE STREETS ARE DEDICATED AS PUBLIC HIGHWAYS TO THE CORPORATION OF THE CITY OF BRAMPTON.

BRANTHAVEN CREDITVIEW INC.

DATED THE 14th DAY OF April, 2025.

Arden Semper
AUTHORIZED SIGNING OFFICER
I HAVE THE AUTHORITY TO BIND THE CORPORATION

SURVEYOR'S CERTIFICATE

I CERTIFY THAT:

- THIS SURVEY AND PLAN ARE CORRECT AND IN ACCORDANCE WITH THE SURVEYS ACT, THE SURVEYORS ACT AND THE LAND TITLES ACT AND THE REGULATIONS MADE UNDER THEM.
- THE SURVEY WAS COMPLETED ON THE 4th DAY OF February, 2025.

DATE February 10th, 2025.

THIS PLAN OF SURVEY RELATES TO AOLS PLAN SUBMISSION FORM NUMBER V-97069.

TOTAL AREA OF SUBDIVISION = 3.536 Ha.

MUNICIPAL APPROVAL

21T-22001B
APPROVED UNDER SECTION 51 OF THE PLANNING ACT, R.S.O. 1990
THIS 10 DAY OF February, 2025

Serve Ganesh
COMMISSIONER, PLANNING, BUILDING AND GROWTH MANAGEMENT
THE CORPORATION OF THE CITY OF BRAMPTON

rpe R-PE SURVEYING LTD.
ONTARIO LAND SURVEYORS
643 Chrislea Road, Suite 7
Woodbridge, Ontario L4L 8A3
Tel: (416) 635-5000 Fax: (416) 635-5001
Tel: (905) 264-0881 Fax: (905) 264-2099
Website: www.r-pe.ca
DRAWN: K.M./T.C. CHECKED: A.K.
JOB No. 21-121 CAD FILE No. 21121s01c

REGISTERED TWO UNITS DWELLINGS

Registration Date: As of: October 01, 2025 - October 31, 2025

MUNICIPAL ADDRESS	DATE REGISTERED
25 Academy Dr, Unit #2	October 7, 2025
22 Adrian Cres, Unit #2	October 7, 2025
12 Agincourt Cir, Unit #2	October 3, 2025
22 Allenhead Cres, Unit #2	October 10, 2025
1 Allness Rd, Unit #2	October 14, 2025
9 Alston Crt, Unit #2	October 3, 2025
74 Amaranth Cres, Unit #2	October 27, 2025
17 Angelgate Rd, Unit #2	October 7, 2025
24 Argelia Cres, Unit #2	October 10, 2025
24 Ashmere Rd, Unit #2	October 22, 2025
71 Ashurst Cres, Unit #2	October 15, 2025
61 Ashwood Cres, Unit #2	October 30, 2025
39 Athlone Ave, Unit #2	October 21, 2025
23 Atkins Cir, Unit #2	October 3, 2025
11 Austin Dr, Unit #2	October 1, 2025
36 Ballycastle Cres, Unit #2	October 24, 2025
6 Banting Cres, Unit #2	October 7, 2025
70 Bayhampton Dr, Unit #2	October 1, 2025
29 Baylor Dr, Unit #2	October 9, 2025
95 Bayridge Dr, Unit #2	October 27, 2025
135 Bellchase Trail, Unit #2	October 22, 2025
39 Bellflower Lane, Unit #2	October 17, 2025
14 Beresford Cres, Unit #2	October 27, 2025
185 Binder Twine Trail, Unit #2	October 27, 2025
18 Borrelli Dr, Unit #2	October 7, 2025

REGISTERED TWO UNITS DWELLINGS

Registration Date: As of: October 01, 2025 - October 31, 2025

MUNICIPAL ADDRESS	DATE REGISTERED
84 Borrelli Dr, Unit #2	October 7, 2025
37 Bramfield St, Unit #2	October 30, 2025
56 Bramhall Cir, Unit #2	October 24, 2025
317 Brisdale Dr, Unit #2	October 15, 2025
18 Brookfield Crt, Unit #2	October 9, 2025
94 Brushwood Dr, Unit #2	October 8, 2025
9 Buffridge Trail, Unit #2	October 17, 2025
286 Buick Blvd, Unit #2	October 2, 2025
14 Burlwood Rd, Unit #2	October 10, 2025
26 Burnham Cres, Unit #2	October 24, 2025
3 Burton Rd, Unit #2	October 10, 2025
80 Bushwood Trail, Unit #2	October 17, 2025
34 Castle Mountain Dr, Unit #2	October 10, 2025
314 Centre St N, Unit #2	October 7, 2025
29 Chapparral Dr, Unit #2	October 7, 2025
31 Claremont Dr, Unit #2	October 16, 2025
40 Claremont Dr, Unit #2	October 1, 2025
100 Clarence St, Unit #2	October 27, 2025
8 Clydesdale Cir, Unit #2	October 2, 2025
81 Coastline Dr, Unit #2	October 3, 2025
66 Cobblestone Crt, Unit #2	October 7, 2025
52 Commodore Dr, Unit #2	October 7, 2025
15 Cookview Dr, Unit #2	October 31, 2025
22 Country Ridge Crt, Unit #2	October 17, 2025
48 Cranmore Crt, Unit #2	October 15, 2025

REGISTERED TWO UNITS DWELLINGS

Registration Date: As of: October 01, 2025 - October 31, 2025

MUNICIPAL ADDRESS	DATE REGISTERED
5 Deloraine Dr, Unit #2	October 28, 2025
34 Demaris Dr, Unit #2	October 15, 2025
5 Devonshire Dr, Unit #2	October 3, 2025
75 Donald Ficht Cres, Unit #2	October 9, 2025
60 Donald Stewart Rd, Unit #2	October 16, 2025
42 Donna Dr, Unit #2	October 10, 2025
58 Donomore Dr, Unit #2	October 3, 2025
17 Dovehaven Cres, Unit #2	October 30, 2025
4 Drayton Cres, Unit #2	October 31, 2025
6 Drummondville Dr, Unit #2	October 17, 2025
52 Dundalk Cres, Unit #2	October 24, 2025
18 Dunlop Crt, Unit #2	October 10, 2025
9 Eagleridge Dr, Unit #2	October 7, 2025
37 Earlsbridge Blvd, Unit #2	October 30, 2025
69 Eastbrook Way, Unit #2	October 8, 2025
20 Eastman Dr, Unit #2	October 3, 2025
83 Eastman Dr, Unit #2	October 15, 2025
11 Ebury Dr, Unit #2	October 3, 2025
24 Ebury Dr, Unit #2	October 15, 2025
74 Ebury Dr, Unit #2	October 17, 2025
66 Echoridge Dr, Unit #2	October 9, 2025
403 Edenbrook Hill Dr, Unit #2	October 30, 2025
17 Edwin Dr, Unit #2	October 24, 2025
157 Elbern Markell Dr, Unit #2	October 2, 2025
5 Elysian Fields Cir, Unit #2	October 10, 2025

REGISTERED TWO UNITS DWELLINGS

Registration Date: As of: October 01, 2025 - October 31, 2025

MUNICIPAL ADDRESS	DATE REGISTERED
100 Enford Cres, Unit #2	October 2, 2025
26 Epsom Downs Dr, Unit #2	October 3, 2025
2 Fairlight St, Unit #2	October 3, 2025
5 Fallingdale Cres, Unit #2	October 3, 2025
4 Farad Crt, Unit #2	October 21, 2025
25 Farrington Cres, Unit #2	October 8, 2025
488 Father Tobin Rd, Unit #2	October 7, 2025
28 Ferguson Pl, Unit #2	October 15, 2025
281 Fernforest Dr, Unit #2	October 24, 2025
57 Field Thistle Dr, Unit #2	October 16, 2025
19 Fieldview Dr, Unit #2	October 2, 2025
56 Florette Pl, Unit #2	October 27, 2025
17 Fordwich Blvd, Unit #2	October 16, 2025
15 Frontenac Cres, Unit #2	October 8, 2025
12 Gallucci Cres, Unit #2	October 22, 2025
50 Garside Cres, Unit #2	October 1, 2025
4 Gatesgill St, Unit #2	October 17, 2025
26 Gatesgill St, Unit #2	October 16, 2025
7 Gervais Dr, Unit #2	October 28, 2025
54 Gladstone Sq, Unit #2	October 2, 2025
1 Goodview Dr, Unit #2	October 15, 2025
37 Goodview Dr, Unit #2	October 31, 2025
40 Great Plains St, Unit #2	October 16, 2025
45 Griselda Cres, Unit #2	October 9, 2025
4 Hackwood Hts, Unit #2	October 24, 2025

REGISTERED TWO UNITS DWELLINGS

Registration Date: As of: October 01, 2025 - October 31, 2025

MUNICIPAL ADDRESS	DATE REGISTERED
46 Hall Cres, Unit #2	October 8, 2025
12 Halldorson Trail, Unit #2	October 7, 2025
125 Havelock Dr, Unit #2	October 24, 2025
61 Haverstock Cres, Unit #2	October 15, 2025
32 Haviland Cir, Unit #2	October 22, 2025
57 Hawtrey Rd, Unit #2	October 15, 2025
89 Hayrake St, Unit #2	October 9, 2025
34 Herkley Dr, Unit #2	October 22, 2025
18 Homeview Rd, Unit #2	October 22, 2025
16 Howard Crt, Unit #2	October 17, 2025
44 Howell St, Unit #2	October 30, 2025
7 Huntspoint Dr, Unit #2	October 22, 2025
20 Iceberg Trail, Unit #2	October 16, 2025
3 Icon St, Unit #2	October 7, 2025
68 Impulse Cir, Unit #2	October 17, 2025
15 Jack Rabbit Cres, Unit #2	October 30, 2025
27 Jack Rabbit Cres, Unit #2	October 7, 2025
32 Jade Cres, Unit #2	October 7, 2025
97 John Carroll Dr, Unit #2	October 30, 2025
48 Judith Cres, Unit #2	October 30, 2025
54 Kanashiro St, Unit #2	October 2, 2025
44 Kessler Dr, Unit #2	October 24, 2025
88 Kettlewell Cres, Unit #2	October 7, 2025
8 Keyworth Cres, Unit #2	October 31, 2025
5 Kingsmere Cres, Unit #2	October 3, 2025

REGISTERED TWO UNITS DWELLINGS

Registration Date: As of: October 01, 2025 - October 31, 2025

MUNICIPAL ADDRESS	DATE REGISTERED
18 Lauraglen Cres, Unit #2	October 22, 2025
46 Leagate St, Unit #2	October 24, 2025
2 Levida St, Unit #2	October 7, 2025
13 Lilly Cres, Unit #2	October 1, 2025
59 Lionshead Lkout, Unit #2	October 3, 2025
15 Longbourne Cres, Unit #2	October 17, 2025
83 Lord Simcoe Dr, Unit #2	October 7, 2025
77 Luella Cres, Unit #2	October 7, 2025
11 Mackay St N, Unit #2	October 21, 2025
54 Major Oaks Dr, Unit #2	October 15, 2025
1 Major Wm. Sharpe Dr, Unit #2	October 7, 2025
6 Marine Dr, Unit #2	October 16, 2025
30 Marshmarigold Dr, Unit #2	October 17, 2025
13 Martree Cres, Unit #2	October 7, 2025
112 McMurchy Ave S, Unit #2	October 30, 2025
13 Merlin Dr, Unit #2	October 10, 2025
12 Merrimac Dr, Unit #2	October 27, 2025
27 Mistybrook Cres, Unit #2	October 2, 2025
36 Mistybrook Cres, Unit #2	October 24, 2025
45 Montjoy Cres, Unit #2	October 16, 2025
6 Moonland Rd, Unit #2	October 30, 2025
29 Mozart Cres, Unit #2	October 9, 2025
1 Muskoka St, Unit #2	October 3, 2025
10 Mussle White Rd, Unit #2	October 1, 2025
40 Myna Crt, Unit #2	October 16, 2025

REGISTERED TWO UNITS DWELLINGS

Registration Date: As of: October 01, 2025 - October 31, 2025

MUNICIPAL ADDRESS	DATE REGISTERED
18 Napanee St, Unit #2	October 7, 2025
18 Natalie Crt, Unit #2	October 15, 2025
40 Needlewood Lane, Unit #2	October 15, 2025
39 Newington Cres, Unit #2	October 21, 2025
21 Nightjar Dr, Unit #2	October 31, 2025
54 Northampton St, Unit #2	October 31, 2025
13 Old Cleeve Cres, Unit #2	October 7, 2025
5 Oldham Cres, Unit #2	October 15, 2025
73 Olympia Cres, Unit #2	October 3, 2025
10 Pacific Wind Cres, Unit #2	October 3, 2025
61 Palmolive St, Unit #2	October 22, 2025
5 Parkend Ave, Unit #2	October 7, 2025
4 Parklawn Dr, Unit #2	October 24, 2025
59 Parkside Dr, Unit #2	October 1, 2025
13 Pathlink Gate, Unit #2	October 9, 2025
92 Peace Valley Cres, Unit #2	October 21, 2025
39 Peak Dr, Unit #2	October 17, 2025
20 Penn Dr, Unit #2	October 17, 2025
4 Picasso Dr, Unit #2	October 7, 2025
33 Pickard Lane, Unit #2	October 31, 2025
15 Prouse Dr, Unit #2	October 22, 2025
13 Purebrook Cres, Unit #2	October 23, 2025
112 Queen Mary Dr, Unit #2	October 1, 2025
16 Rainy Dale Rd, Unit #2	October 1, 2025
18 Redcastle St, Unit #2	October 7, 2025

REGISTERED TWO UNITS DWELLINGS

Registration Date: As of: October 01, 2025 - October 31, 2025

MUNICIPAL ADDRESS	DATE REGISTERED
29 Redwillow Rd, Unit #2	October 31, 2025
18 Redwood Pl, Unit #2	October 2, 2025
96 Reynier Dr, Unit #2	October 2, 2025
57 Ripley Cres, Unit #2	October 7, 2025
70 River Rock Cres, Unit #2	October 10, 2025
82 River Rock Cres, Unit #2	October 24, 2025
237 Robert Parkinson Dr, Unit #2	October 7, 2025
44 Saint Grace Crt, Unit #2	October 15, 2025
41 Saintsbury Cres, Unit #2	October 28, 2025
94 Saintsbury Cres, Unit #2	October 16, 2025
142 Saintsbury Cres, Unit #2	October 22, 2025
93 Sand Cherry Cres, Unit #2	October 24, 2025
10 Sproule Dr, Unit #2	October 10, 2025
5 Streamline Dr, Unit #2	October 7, 2025
52 Sunny Glen Cres, Unit #2	October 22, 2025
168 Sussexvale Dr, Unit #2	October 31, 2025
35 Swanton Rd, Unit #2	October 31, 2025
11 Sweetwood Cir, Unit #2	October 14, 2025
28 Tatra Cres, Unit #2	October 30, 2025
43 Teal Crest Cir, Unit #2	October 7, 2025
8 Tetra Crt, Unit #2	October 7, 2025
15 Thorson Gate, Unit #2	October 27, 2025
76 Tideland Dr, Unit #2	October 24, 2025
7 Tidewater Rd, Unit #2	October 15, 2025
115 Tiller Trail, Unit #2	October 3, 2025

REGISTERED TWO UNITS DWELLINGS

Registration Date: As of: October 01, 2025 - October 31, 2025

MUNICIPAL ADDRESS	DATE REGISTERED
3 Tina Crt, Unit #2	October 22, 2025
42 Torrance Woods, Unit #2	October 22, 2025
97 Torrance Woods, Unit #2	October 1, 2025
51 Travis Cres, Unit #2	October 7, 2025
6 Treasure Dr, Unit #2	October 30, 2025
10 Treleaven Dr, Unit #2	October 31, 2025
7 Tremblay St, Unit #2	October 3, 2025
62 Trevino Cres, Unit #2	October 8, 2025
24 Unwind Cres, Unit #2	October 7, 2025
85 Valleyway Dr, Unit #2	October 17, 2025
122 Valonia Dr, Unit #2	October 31, 2025
541 Veterans Dr, Unit #2	October 16, 2025
51 Viewmount Cres, Unit #2	October 3, 2025
23 Wainwright Dr, Unit #2	October 10, 2025
12 Westbrook Ave, Unit #2	October 30, 2025
14 White Rd, Unit #2	October 8, 2025
23 Wildhorse Lane, Unit #2	October 30, 2025
34 Williamson Dr, Unit #2	October 30, 2025
58 Wilton Dr, Unit #2	October 3, 2025
20 Windswept Trail, Unit #2	October 7, 2025
106 Woodward Ave, Unit #2	October 24, 2025
42 Yellow Avens Blvd, Unit #2	October 2, 2025
53 Youngestar Trail, Unit #2	October 3, 2025